

SUPERPLUS REPLACEMENT WATER FILTRATION CARTRIDGE

For Model #: SP20-RC



INSTRUCTIONS/ASSEMBLY USE AND CARE MANUAL

(Important: Read this manual thoroughly before install)

Product Customer Support Hotline:
Toll Free: 1-800-635-4017

TABLE OF CONTENTS

- 2 General Notes
- 3 About Your Product
- 4 Cartridge Change-Out
- 5 QR Code Instructions
- 6 Troubleshooting & Repair

HELP AND SUPPORT

Selecto, Inc.
3980 Lakefield Court
Suwanee, GA 30024 USA

678-475-0799 | 1-800-635-4017 | Customer-Service@SelectoInc.com

WWW.SELECTOINC.COM

THANK YOU FOR PURCHASING OUR PRODUCT

Everyone here at Selecto, Inc. would like to thank you for your support and continued use of our products. We believe everyone should have access to safe, clean water. Your purchase is a significant step towards a clean future.

GENERAL NOTES

It is important to ensure that you are in compliance with all applicable state and local plumbing codes before you start installation of this product.

WARNING

- 1) Read and understand all of the instructions before attempting to install and operate this equipment. Failure to do so may result in injury and damage to person and/or property.
- 2) Wear adequate eye protection and protective clothing when installing, operating, and servicing the unit.
- 3) Do NOT install system direct to the sunlight or freezing environment.
- 4) Be aware of touch or heat which can damage the plastic filter and/or fittings; always keep at least a 18" away from plastic components when working on the hard piping.
- 5) Check all connections for leaks before operating the unit.
- 6) Check that all clips are in the right position.

PACKAGE CONTENTS

1 Filtration Cartridge
1 Lubricant Pack
Instructions/Assembly Use and Care Manual

OPTIONAL PARTS LIST

Twin Head Assembled #: 300-778HD
Pressure Gauge #: 300-023FA
Plastic 3/4" Shut-Off Valve #: 300-743
Inlet Fitting 3/4" #: 300-714
Outlet Fitting 3/4" #: 300-720
Pressure Relief Valve #: 300-738
3/4" Plug #: 300-715
Blue Retaining Clip #: 300-708E

ABOUT YOUR PRODUCT



SP20-RC

Fits the SP20 Water Filtration System.

Dimensions:

7" x 7" x 23"

Outer Box Dimensions:

24" x 13.5" x 6.625"

Weight:

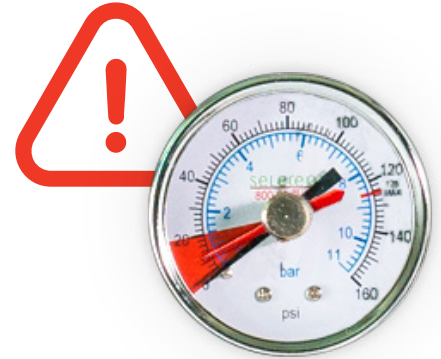
Without Water: 10 lbs.

Packaged Weight:

11 lbs.

CARTRIDGE CHANGE-OUT INSTRUCTIONS

Cartridges should be changed at least once a year, when the pressure on the gauge has dropped into the red zone (less than 20 psi), or when bad tastes and/or odors return.



1. Shut off inlet valve
2. Push "Red" pressure relief button to relieve pressure
Normally located at left end of the filter system.
Push until no more water comes out.
3. Grasp filter cartridge, and twist 1/8 counter-clockwise turn
The cartridge should be twisted counter-clockwise in relation to the bottom of the cartridge.
4. Pull downward about 2" to remove the filter cartridge
Be sure to properly dispose of the old cartridges (#5 recyclable).
5. From the new cartridge, remove and discard the "Red" sanitary cap.
The sanitary cap is located at the top of the new cartridge.
6. Be sure to apply sufficient lubrication to the O-Rings.
Lubrication is provided.
7. Align the ear of the cartridge with the notch located in the filter head. Push upwards to insert.
Be sure to push cartridge all the way in.
8. Turn cartridge clockwise until a definite stop is felt and the cartridge is sealed.
The cartridge should be twisted clockwise in relation to the bottom of the cartridge.
Hand tight is sufficient for a proper seal.
9. Turn on the inlet valve. Flush newly installed filter cartridge for 10 minutes (from sink faucet).



QR CODE INSTRUCTIONS

Record the cartridge change date on the label located on the side of the filter head. It is recommended to replace cartridges at least once a year, or when the pressure on the gauge has dropped into the red zone (less than 20 psi), or when bad tastes and/or odors return.

Use the QR code to register and receive an email alert when it's time to change the filtration cartridges to maximize filter performance.



Get email alerts!



1. Scan the QR code on filter cartridge with your smart phone.
2. Follow the instructions on screen to either register for filter replacement reminders, or to order replacement filters.
3. Check your email regularly to be notified when your filter is ready to be changed.

TROUBLESHOOTING AND REPAIR

All SuperPlus Filtration Systems are fully inspected and pressure tested by factory. IF LEAKS- Note: The inlet shut-off valve must be turned "OFF" (handle in vertical position), and pressure relieved by pushing the "Red" pressure relief button before attempting to fix any leakage problems.

- 1. Leaks at threaded connection points.** This type of leak should be repaired by removing the fitting and applying additional Teflon tape or thread sealant compound. Do not attempt to repair by tightening the fitting more. Over tightening fittings into plastic parts may cause the plastic to crack. This type of damage is considered abuse and not covered by the warranty.
- 2. Leaks at Junction of Modular Fittings to Filter Head.** If leaking persists at the junction points, remove the retainer clip carefully by inserting a screwdriver or other object into to the hole and gently prying "UP" to remove. Gently remove the leaking fitting by "pulling straight out". Apply additional lubricant (supplied) to the O-ring and re-insert the fitting by gently "pushing all the way in" until the shoulder on the fitting contacts the filter head. Examine the retaining clip for any cracks from removal and re-insert by "pushing straight down" until it is all the way in. If retaining clip is cracked or stretched in any way, discard it and use a new one (supplied). If the above procedure does not cure the leak, repeat the processes above, replacing the O-Ring (supplied).
- 3. Leaks Between Cartridge and Filter Head** While looking at the top of the filter system, grasp the cartridge and turn slightly counter-clockwise, when viewed from bottom and then back clockwise, making sure that the ears on the cartridge are fully engaged into the filter head. The "white" locking ears on the cartridge should be fully visible in the 4 recesses on the "black" filter head.
- 4. If leakage persists,** check all connecting fittings/O-Rings and replace the damage fittings/O-Rings if damaged or remove cartridge by following the procedures outlined in the Cartridge Change-Out Instructions on "Cartridge Change-Out" Page.
- 5. Inspect the O-Ring** on the top of the cartridge for damage. Replace with a new O-Ring (supplied) and lubricate well with lubricant supplied. Replace the cartridge by following the procedures outlined in the Cartridge Change-Out Instructions on "Cartridge Change-Out" Page.