

SUPERPLUS REPLACEMENT WATER FILTRATION CARTRIDGE

For Model #: SP20-2RC, SP40-2RC



INSTRUCTIONS/ASSEMBLY USE AND CARE MANUAL

(Important: Read this manual thoroughly before install)

TABLE OF CONTENTS

- 2 General Notes
- 3 About Your Product
- 4 Cartridge Change-Out Instructions
- 5 QR Code Instructions
- 6 Troubleshooting & Repair

HELP AND SUPPORT

Selecto, Inc.
3980 Lakefield Court
Suwanee, GA 30024 USA

WWW.SELECTOINC.COM

Product Customer Support Hotline:
Toll Free: 1-800-635-4017

Customer-Service@SelectoInc.com

Monday to Friday
8:00 a.m. – 5:00 p.m. EST

THANK YOU FOR PURCHASING OUR PRODUCT

Everyone here at Selecto, Inc. would like to thank you for your support and continued use of our products. We believe everyone should have access to safe, clean water. Your purchase is a small step towards a clean future.

GENERAL NOTES

It is important to ensure that you are in compliance with all applicable state and local plumbing codes before you start installation of this product.

WARNING

- 1) Read and understand all of the instructions before attempting to install and operate this equipment. Failure to do so may result in injury and damage to person and/or property.
- 2) Prior to installation, shut off the water.
- 3) It is important to ensure the mounting to the wall is strong enough to bear the water weight of the product.
- 4) After installation, check all connections for leaks before operating the unit.
- 5) Refer to the Installation Procedures to ensure that all clips are in the right position before operating the unit.

PACKAGE CONTENTS

2 Filtration Cartridges
2 Lubricant Packs
Instructions/Assembly Use and Care Manual

OPTIONAL PARTS LIST

Twin Head Assembled #: 300-778HD
Pressure Gauge #: 300-023FA
Plastic 3/4" Shut-Off Valve #: 300-743
Inlet Fitting 3/4" #: 300-714
Outlet Fitting 3/4" #: 300-720
Pressure Relief Valve #: 300-738
3/4" Plug #: 300-715
Blue Retaining Clip #: 300-708E

ABOUT YOUR PRODUCT



SP20-2RC

Fits the SP20-2 Water Filtration System.

Dimensions:

7" x 7" x 23"

Outer Box Dimensions:

24" x 13.5" x 6.625"

Weight:

Without Water: 19 lbs.

Packaged Weight:

20 lbs.

SP40-2RC

Fits the SP40-2 Water Filtration System.

Dimensions:

7" x 7" x 17"

Outer Box Dimensions:

17.775" x 13.5" x 6.625"

Weight:

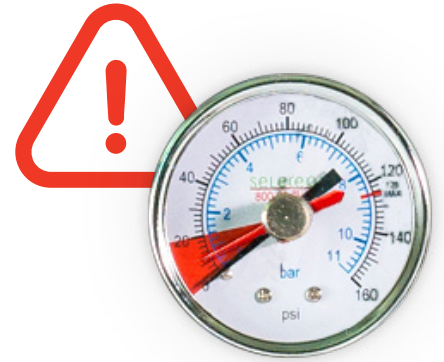
Without Water: 12.5 lbs.

Packaged Weight:

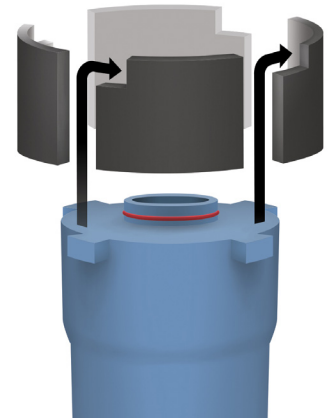
13.5 lbs.

CARTRIDGE CHANGE-OUT INSTRUCTIONS

Cartridges should be changed at least once a year, when the pressure on the gauge has dropped into the red zone (less than 20 psi), or when bad taste and/or odor return.



1. Shut off inlet valve
2. Push "Red" pressure relief button to relieve pressure
Normally located at left end of the filter system.
Push until no more water comes out.
3. Grasp filter cartridge, and twist 1/8 counter-clockwise turn
The cartridge should be twisted counter-clockwise in relation to the bottom of the cartridge.
4. Pull downward about 2" to remove the filter cartridge
Be sure to properly dispose of the old cartridges (#5 recyclable).
5. From the new cartridge, remove and discard the "Red" sanitary cap.
The sanitary cap is located at the top of the new cartridge.
6. Be sure to apply sufficient lubrication to the O-Rings.
Lubrication is provided in Spare Parts Kit.
7. Align the ear of the cartridge with the notch located in the filter head. Push upwards to insert.
Be sure to push cartridge all the way in.
8. Turn cartridge clockwise until a definite stop is felt and the cartridge is sealed.
The cartridge should be twisted clockwise in relation to the bottom of the cartridge.
Hand tight is sufficient for a proper seal.
9. Turn on the inlet valve. Flush newly installed filter cartridges for 3 minutes (from sink faucet).



QR CODE INSTRUCTIONS

It is recommended to replace cartridges at least once a year, or when the pressure on the gauge has dropped into the red zone (less than 20 psi), or when bad taste and/or odor return.

Use the QR code to register and receive an email alert when it's time to change the filtration cartridges to maximize filter performance.



Get email alerts!



1. Scan the QR code on filter cartridge label with your smart phone.
2. Follow the instructions on the screen to either register for filter replacement reminders, or to order replacement filters.
3. You will receive reminders via email to change your filter cartridge.

TROUBLESHOOTING AND REPAIR

All SuperPlus Filtration Systems are fully inspected and pressure tested by factory. IF LEAKS- Note: The inlet shut-off valve must be turned "OFF" (handle in vertical position), and pressure relieved by pushing the "Red" pressure relief button before attempting to fix any leakage problems.

- 1. Leaks Between Cartridge and Filter Head** While looking at the top of the filter system, grasp the cartridge and turn slightly counter-clockwise, when viewed from bottom and then back clockwise, making sure that the ears on the cartridge are fully engaged into the filter head. The "blue" locking ears on the cartridge should be fully visible in the 4 recesses on the "black" filter head.